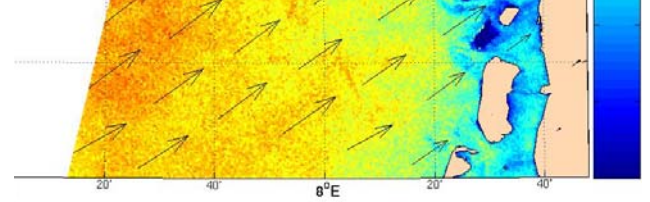


ERS-2 SAR 16 Januar 2000 10.30



ERS-2 SAR 1 Februar 2000 10.30

SAR (European Research Satellite with
 format, calibrated by the ESA SAR to
) into wind speed (in m s^{-1}) through the
 om 2-D Fast Fourier analysis of the wi

Validation metho

pillary and
 duce

radar
 analysis
 (FR) and C-

The wind speed and wind directions retrie
 from the 62 m tall meteorological mast of
 farm project. It is located 14 km offshore
 speed observations are recorded during fe
 into cells of size 400 m by 400 m (raw da
 averaged wind speed values in the upwin
 calculated. The linear regression results o

Wind speed: $y=1.04x-1.79$ with $r^2=0.88$ a

Wind direction: $y=1.11x-31.57$ with $r^2=0$